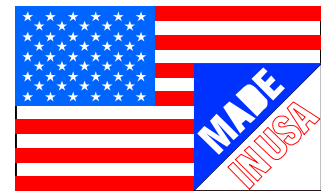


SPECIFICATION SHEET



52nd Street® Series Frameless Recessed in the wall Cabinet

Dimensions: See dimensions chart

Door Style: Slab Door, MDF, Blum concealed Hinges with soft close

Materials: Solid pine box, Solid maple door

Mounting: Mount by screwing into studs on both sides of the wall opening

Finish: Depending on model number, cabinet may be unfinished, or finished in any one of our colors, or your custom paint color.

Features:

- ✓ Solid wood construction – screwed together to last a lifetime, especially in a humid bathroom environment!
- ✓ Handcrafted right here in the USA, in sunny Sarasota, Florida!
- ✓ Fully adjustable glass shelves
- ✓ Solid pine box is already finished with white enamel inside regardless of which door finish or model you choose
- ✓ Solid MDF slab style door
- ✓ Concealed hinges with soft close feature built in
- ✓ Easy installation – simply screws to the studs on each side of the opening using included screws. Four mounting screws for super secure mounting
- ✓ Our unique, patented design of shelf supports keeps the shelf in place. Because the shelves slide in through the front, the shelves can't fall off and can't move, but you can still adjust them anytime you want.
- ✓ Door is primed and ready to paint. Paint it you wall color and the cabinet virtually disappears.
- ✓ Door is reversible – we don't drill for the knob, so you could mount the door on either side as desired.
- ✓ Only requires two screws to mount the door!
- ✓ Door only projects about 1" from the wall when closed.
- ✓ Changeable / Upgradeable anytime with over 30 different door styles available.

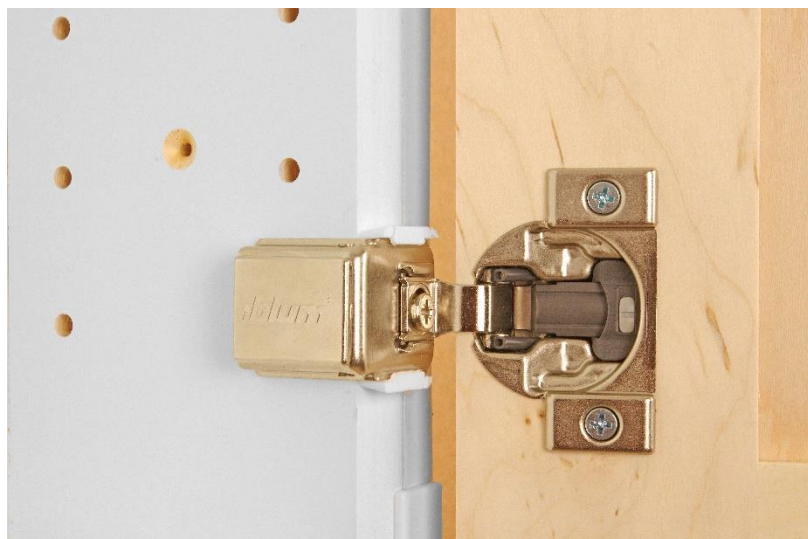
SPECIFICATION SHEET

52nd Street® FR Series Frameless
Recessed in the wall Cabinet



Cabinet box with adjustable glass shelves inside is already finished in white enamel regardless of model chosen.

Solid MDF slab Style door can open either direction



Concealed hinges with soft close built-in



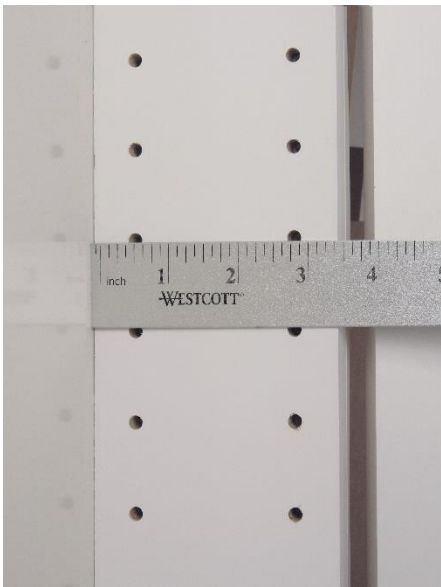
Glass shelves slide into our own design of shelf supports assuring the shelves won't fall off or rock.

SPECIFICATION SHEET

52nd Street® Series Frameless
Recessed in the wall Cabinet



Thin plastic trim surround covers the edges of your rough opening once it's installed in the wall. (1/2" of coverage all the way around) The door covers the entire trim surround when closed.



Full 3.5" of depth inside the cabinet



WG *Wood Products*

213 Field End Street
Sarasota FL 34240

www.wgwoodproducts.com

(913)-829-6000

Additional glass shelves, optional glass shelves, as well as other parts and accessories are always available. Changeable / upgradeable with over 30 different door styles available.

SPECIFICATION SHEET

52nd Street® Series Frameless
Recessed in the wall Cabinet

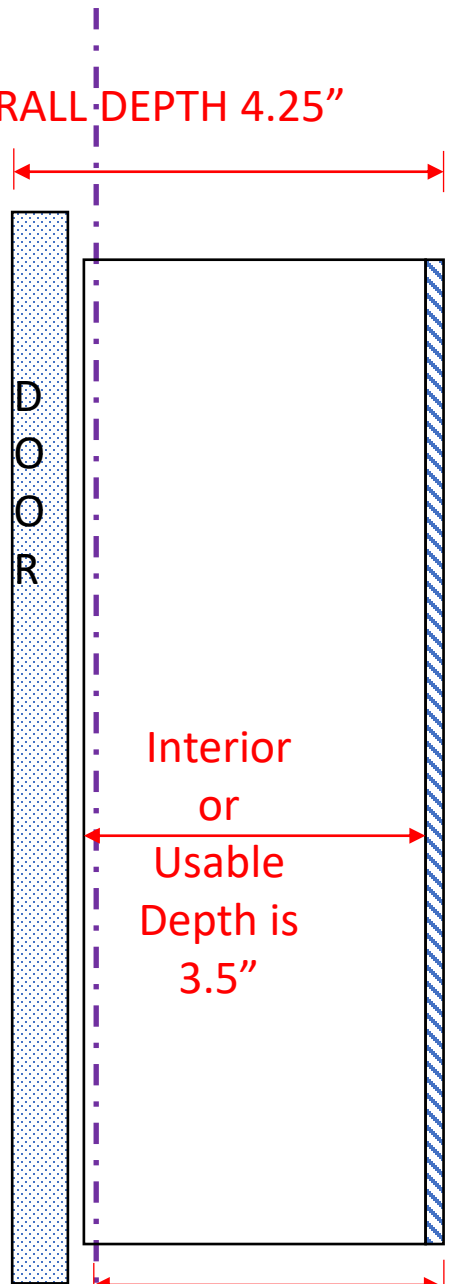
Side View of Recessed Cabinet

3.5" deep 52nd Street Series Frameless models (4.25" overall depth)

These models have a door which is $\frac{3}{4}$ " larger all the way around than the cabinet box itself so the entire cabinet box and trim surround is covered when the door is closed.

These models must be screwed to the studs on both sides of the wall opening.

OVERALL DEPTH 4.25"



Frameless recessed cabinets have a thin plastic trim surround which covers the rough edge of the drywall when inserted into the opening.

Drywall surface

Back of wall opening

**OVERALL
BOX DEPTH
IS 3.5"
DEEP**

**Interior
or
Usable
Depth is
3.5"**

SPECIFICATION SHEET

52nd Street® Series Frameless
Recessed in the wall Cabinet

Model #	Door Height	Door Width	Box Insert Dimensions	Interior Dimensions	Rough Opening Needed in wall	Number of Shelves Included	Number of Doors Included
218	19.5	15.5	18h x 14w x 3.75d	16.5h x 12.5w x 3.5d	18.25h x 14.25w	3	1
222	23.5	15.5	22h x 14w x 3.75d	20.5h x 12.5w x 3.5d	22.25h x 14.25w	3	1
224	25.5	15.5	24h x 14w x 3.75d	22.5h x 12.5w x 3.5d	24.25h x 14.25w	3	1
228	29.5	15.5	28h x 14w x 3.75d	26.5h x 12.5w x 3.5d	28.25h x 14.25w	3	1
230	31.5	15.5	30h x 14w x 3.75d	28.5h x 12.5w x 3.5d	30.25h x 14.25w	4	1
234	35.5	15.5	34h x 14w x 3.75d	32.5h x 12.5w x 3.5d	34.25h x 14.25w	4	1



WG *Wood Products*

213 Field End Street
Sarasota FL 34240

www.wgwoodproducts.com

(913)-829-6000

*Additional glass shelves, optional glass shelves, as well as other parts and accessories are always available.
Changeable / upgradeable with over 30 different door styles available.*