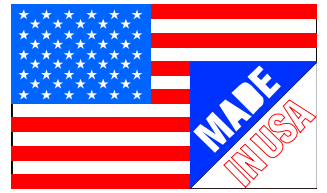


# SPECIFICATION SHEET



## Rebel® Series Plastic Recessed Single Toilet Paper Holder

**Dimensions:** See dimensions chart

**Materials:** Plastic (high impact polystyrene)

**Mounting:** Recessed versions can be mounted with construction adhesive. Can also be mounted in the side of a vanity if you have clearance inside.

**Finish:** White

### **Features:**

- ✓ Nearly indestructible!
- ✓ Made in USA
- ✓ Antimicrobial additive helps to cut down on the spread of germs
- ✓ Easy installation using only construction adhesive
- ✓ Spring loaded roller is raised off center so that even a brand new roll won't drag on the bottom
- ✓ Recesses nearly the whole roll in the wall – all competitors “recessed” toilet paper holder don't really recess very much because they don't use the whole depth of the wall.
- ✓ Fits single and double size rolls only. Will NOT work with Jumbo, MEGA or Extra Large rolls.

**NOTE:** If you already have an opening in your wall from a previous “recessed” toilet paper holder, measure your opening. Your opening will need to be 5.5”w x 5.5”h to accommodate these holders. They were designed as a direct replacement for the old metal chrome holders in most cases. (standard 2x4 wall depth).

# SPECIFICATION SHEET

Rebel® Series Plastic Recessed Single Toilet Paper Holder



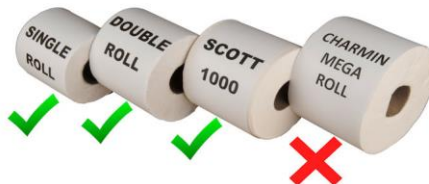
REB-1 (White)



REB-1 (White)

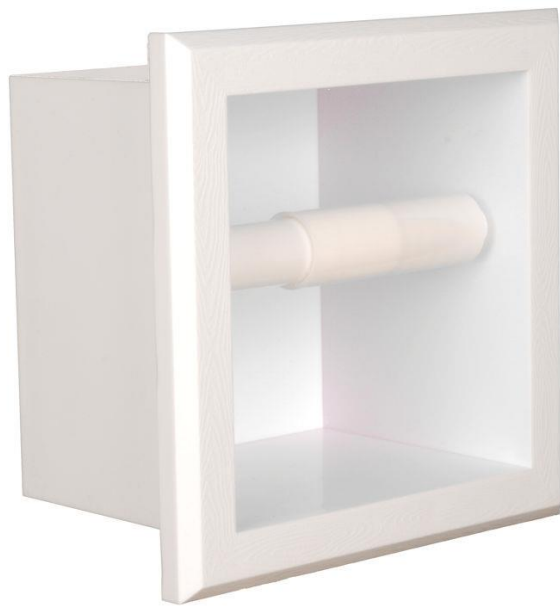


Rebel TP Holders can use Single and Double size rolls and Scott 1000's. They are not large enough to accommodate the Jumbo rolls, Costco rolls or Charmin MEGA rolls.



# SPECIFICATION SHEET

## Rebel® Series Plastic Recessed Single Toilet Paper Holder

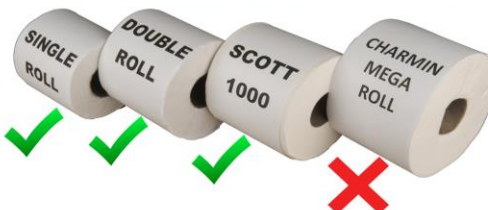


REB-7 (White)

REB-7 (White)



Rebel TP Holders can use Single and Double size rolls and Scott 1000's. They are not large enough to accommodate the Jumbo rolls, Costco rolls or Charmin MEGA rolls.



# SPECIFICATION SHEET

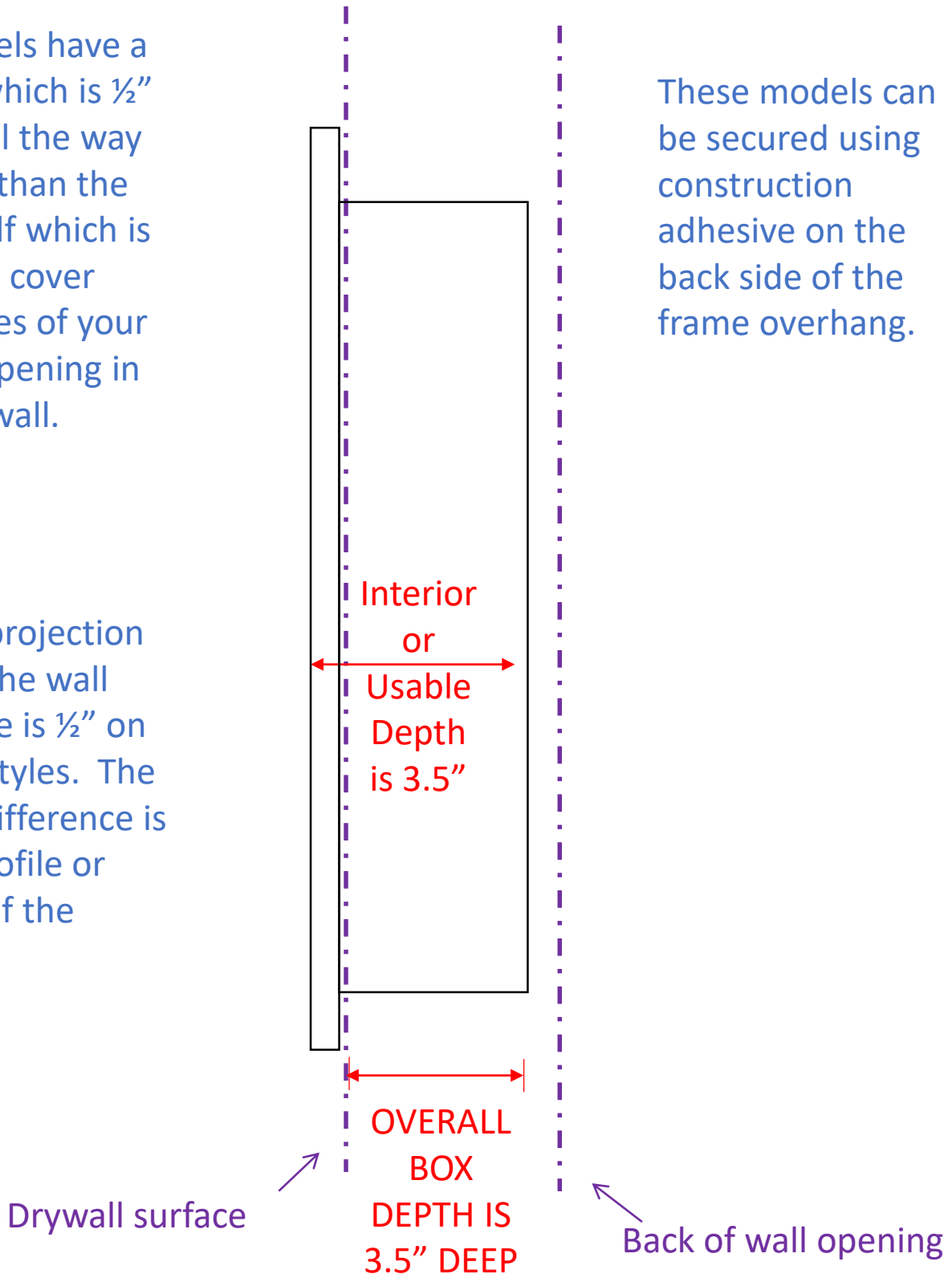
Rebel® Series Plastic Recessed Single Toilet Paper Holder

## Side View of Toilet Paper Holder

All models have a frame which is  $\frac{1}{2}$ " larger all the way around than the box itself which is there to cover the edges of your rough opening in the drywall.

These models can be secured using construction adhesive on the back side of the frame overhang.

Total projection from the wall surface is  $\frac{1}{2}$ " on both styles. The only difference is the profile or style of the frame.



# SPECIFICATION SHEET

## Rebel® Series Plastic Recessed Single Toilet Paper Holder

Model	Overall Height	Overall Width	Box Insert Dimensions	Rough Opening needed in Wall	Overall front Frame dimensions	Interior Width	Interior Height	Interior Depth
REB-1	6.5"	6.5"	5.5"h x 5.5"w	5.5"h x 5.5"w	6.5"h x 6.5"w	5.5"	5.5"	3.5"
REB-7	6.5"	6.5"	5.5"h x 5.5"w	5.5"h x 5.5"w	6.5"h x 6.5"w	5.5"	5.5"	3.5"



**WG** *Wood Products*  
 213 Field End Street  
 Sarasota FL 34240  
[www.wgwoodproducts.com](http://www.wgwoodproducts.com)  
 (913)-829-6000